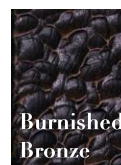




Silk Colours

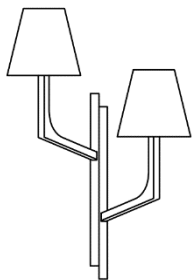


Metalwork Finishes



PEDICEL WALL LIGHT WITH LINEN SILK

Model Number – TL-PEDWALL

Width	Height	Depth	Lamp Holders	Max Wattage	Weight	
Pedicel Wall Light with Linen Silk- TL-PEDWALL						
13 ¾"	21"	8 ¼"	2 – E12	20W each	9 lb	



General:

All measurements and weights are approximate - our lights are hand crafted so there will be some variation.

Made to USA standards and designed to operate at 120V / 60Hz.

We recommend using only golf ball style light sources in this light. The lamp holders in the Pedicel wall light are standard small Edison Screw (E12). Please note, light sources are not supplied with UL Listed orders.

Modifications available:

- Client's own silk shades
- Custom silk shades – any colour from Pongees 745 Indian Douppion, 431D Crepe Satin or 738 Tasar silk range
- Symmetrical pair available on request

Call us for more information on modifications.

Packaging Information:

Please contact us for packaging information on smaller products as the box weights and dimensions are dependent on the quantity of lights in the order.

Assembly:

You will need a qualified electrician to install your light.

Our lights come with comprehensive installation instructions. They shouldn't need much maintenance, but we give you some information on that too.

Made in England.

All of our lights are designed and manufactured in England by skilled craftsmen and women.

All designs are copyright to Tigermoth Lighting Ltd.

WEEE Registration Number: WEE/BU3809XD

Tigermoth Lighting is a Lighting Industry Association Quality Assured Company.



A range of Tigermoth Lighting products are UL approved under the UL General Coverage Scheme.



UL File No. E499008