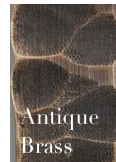




Silk Colours



Metalwork Finishes



DAPPLE CEILING LIGHT

Model Number – TL-SDAP; TL-MDAP; TL-LDAP

Diameter	Height excl. suspension	Suspension Rod Length	Lamp Holders	Max Wattage	Weight	Ceiling Rose	Minimum hanging height
Small Dapple Ceiling Light - TL-SDAP							
300mm	550mm	500mm	1	60W each	3 Kg	80mm dia.	
Medium Dapple Ceiling Light - TL-MDAP							
550mm	480mm	500mm	3	60W each	5 Kg	80mm dia.	
Large Dapple Ceiling Light - TL-LDAP							
750mm	560mm	500mm	3	60W each	7 Kg	80mm dia.	



General:

All of our lamp holders are standard large Edison Screw (E27).

Made to IEC Standards designed to operate at 240V/50Hz. Certification for National Deviations e.g. AS/NZS is available on request.

All measurements and weights are approximate - our lights are hand crafted so there will be some variation.

Please note that the antique brass finish may develop a slight patina over time due to the natural properties of the material.

We recommend using only frosted candle or golf ball style light sources in this chandelier.

Assembly:

You will need a qualified electrician to install your light.

Our lights come with comprehensive installation instructions. They shouldn't need much maintenance but we give you some information on that too.

Modifications available:

- Custom length of suspension rod up to 3.5m maximum
- Client's own silk shades
- Custom silk shades - any colour from Pongees 745 Indian Douppion or 431D Crepe Satin range

Call us for more information on modifications.

Made in England.

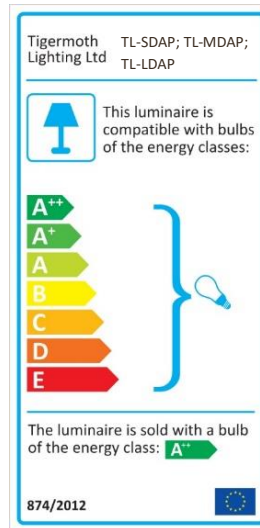
All of our lights are designed and manufactured in England by skilled craftsmen and women.

All designs are copyright to Tigermoth Lighting Ltd.

WEEE Registration Number: WEE/BU3809XD

For more information call - +44 (0) 118 984 5232
or visit – www.tigermothlighting.com

Energy Rating:



Packaging Information:

Please contact us for packaging weights and dimensions for the dapple collection.

Tigermoth Lighting is a Lighting Industry Association Quality Assured Company.

