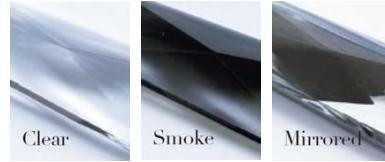




Crystal Colours



Chain Colours

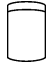



Metalwork Finishes



CRESCENT WALL LIGHT

Model Number — TL-UL-WMINI; TL-UL-WMAXI

Width	Depth	Height	Lamp Holders	Max Wattage	Weight	
Mini Crescent Wall Light - TL-UL-WMINI						
6 ¼"	3 ¼"	8 ½"	1 - E26	40W each	3.3lb	
Maxi Crescent Wall Light - TL-UL-WMAXI						
6 ¼"	3 ¼"	13 ¾"	1 - E26	40W each	4.4lb	



General:

All the lamp holders in our Chain / Crystal collection are Edison Screw (E26).

Made to USA standards and designed to operate at 120V / 60Hz

All measurements and weights are approximate - our lights are hand crafted so there will be some variation.

We recommend using only candle or golf ball style light sources in this wall light. Please note, light sources are not supplied with UL Listed orders.

Assembly:

Crystal wall lights will arrive with the crystal packaged separately in strands (this is common practice and is done to prevent damage to the crystal in transit). All you need to do to assemble your light is to hook each strand onto the frame with the hooks provided.

We recommend that you use a qualified electrician to install your light.

Our lights come with comprehensive installation instructions. They shouldn't need much maintenance but we give you some information on that too.

Made in England.

All of our lights are designed and manufactured in England by skilled craftsmen and women.

All designs are copyright to Tigermoth Lighting Ltd.

Tigermoth Lighting is a Lighting Industry Association Quality Assured Company.



A range of Tigermoth Lighting products are UL approved under the UL General Coverage Scheme.

UL File No. E499008

