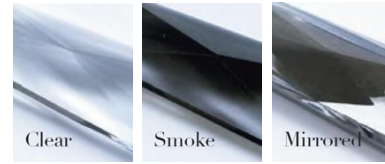




**Crystal Colours**



**Chain Colours**



**Flex Colours**

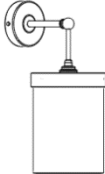
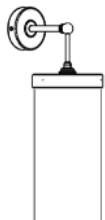


**Metalwork Finishes**



## PENDANT WALL LIGHT WITH CRYSTAL OR CHAIN

Model Number - PENDANTWL + PMINI / PMAXI

Width	Height	Depth excl. pendant	Lamp Holders	Max Wattage	Weight	Wall Canopy Dia.	
Mini Pendant Wall Light - TL-PENDANTWL + TL-PMINI							
160mm	380mm	240mm	1 - E27	40W	2 Kg	100mm dia.	
Maxi Pendant Wall Light - TL-PENDANTWL + TL-PMAXI							
160mm	510mm	240mm	1 - E27	40W	3 Kg	100mm dia.	



## General:

All measurements and weights are approximate - our lights are hand crafted so there will be some variation.

Made to IEC Standards designed to operate at 240V/50Hz. Certification for National Differences e.g. AS/NZS is available on request.

We recommend using only candle or golf ball style light sources in this light. We can supply suitable dimmable LED light sources.

## Assembly:

You will need a qualified electrician to install your light.

Our lights come with comprehensive installation instructions. They shouldn't need much maintenance but we give you some information on that too.

## Packaging Information:

Please contact us for packaging information on smaller products as the box weights and dimensions are dependent on the quantity of lights in the order.

## Made in England.

All of our lights are designed and manufactured in England by skilled craftsmen and women.

All designs are copyright to Tigermoth Lighting Ltd.

WEEE Registration Number: WEE/BU3809XD

Tigermoth Lighting is a Lighting Industry Association Quality Assured Company.

