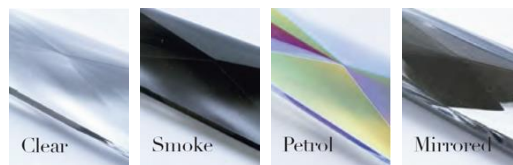




Crystal Colours



Chain Colours



Metalwork Finishes



STEM WALL LIGHT WITH CHAIN OR CRYSTAL

Model Number — TL-WSTEM; TL-RDWSTEM; TL-WSTS; TL-RDWSTS

Width	Height	Depth	Lamp Holders	Max Wattage	Weight	
Double Stem Wall Light with Chain or Crystal – TL-WSTEM						
330mm	420mm	235mm	2	20W each	3.0Kg	
Reduced Depth Double Stem Wall Light with Chain or Crystal – TL-RDWSTEM						
240mm	420mm	150mm	2	20W each	3.0Kg	
Single Stem Wall Light with Chain or Crystal – TL-WSTS						
110mm	420mm	235mm	1	20W each	2.0Kg	
Reduced Depth Single Stem Wall Light with Chain or Crystal – TL-RDWSTS						
110mm	420mm	150mm	1	20W each	2.0Kg	



General:

All the lamp holders in our Stem collection are standard large Edison Screw (E27).

Made to IEC Standards designed to operate at 240V/50Hz. Certification for National Deviations e.g. AS/NZS is available on request.

All measurements and weights are approximate - our lights are hand crafted so there will be some variation.

We recommend using only candle or golf ball style light sources in this wall light.

Assembly:

You will need a qualified electrician to install your light.

Crystal Stem Wall Lights will arrive with the crystal packaged separately in strands (this is common practice and is done to prevent damage to the crystal in transit). All you need to do to assemble your light is to hook each strand onto the frame with the hooks provided.

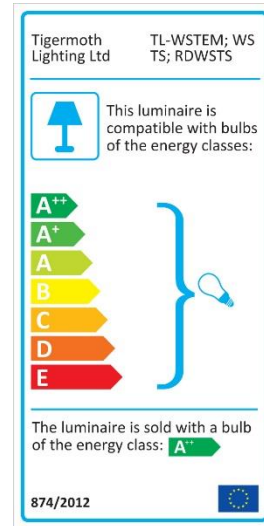
Our lights come with comprehensive installation instructions. They shouldn't need much maintenance, but we give you some information on that too.

Modifications available:

- Certified IP44 version available (see next page).

Call us for more information on modifications.

Energy Rating:



Packaging Information:

Please contact us for packaging information on smaller products as the box weights and dimensions are dependent on the quantity of lights in the order.



IP44 STEM WALL LIGHT WITH CHAIN OR CRYSTAL

Model Number – TL-IP44WSTEM; TL- IP44RDWSTEM; TL- IP44WSTS;
TL- IP44RDWSTS

Width	Height	Depth	Lamp Holders	Max Wattage	Weight	
IP44 Double Stem Wall Light with Chain or Crystal – TL-IP44WSTEM						
330mm	420mm	235mm	2	5W each	3.0Kg	
IP44 Reduced Depth Double Stem Wall Light with Chain or Crystal – TL- IP44RDWSTEM						
240mm	420mm	150mm	2	5W each	3.0Kg	
IP44 Single Stem Wall Light with Chain or Crystal – TL- IP44WSTS						
110mm	420mm	235mm	1	5W each	2.0Kg	
IP44 Reduced Depth Single Stem Wall Light with Chain or Crystal – TL- IP44RDWSTS						
110mm	420mm	150mm	1	5W each	2.0Kg	

Differences from standard wall lights:

All lamp holders in IP44 wall lights are G9.

IP44 wall lights are supplied with dimmable G9 LED Light sources.

Not all G9 LED lamps fit inside the luminaire, if replacements are needed please contact us.

We cannot advise on what IP rating you require for your bathroom lighting; please check with your electrical contractor prior to ordering.

Made in England.

All of our lights are designed and manufactured in England by skilled craftsmen and women.

All designs are copyright to Tigermoth Lighting Ltd.

WEEE Registration Number: WEE/BU3809XD

For more information call - +44 (0) 118 984 5232
or visit – www.tigermothlighting.com

Tigermoth Lighting is a
Lighting Industry
Association Quality
Assured Company.

