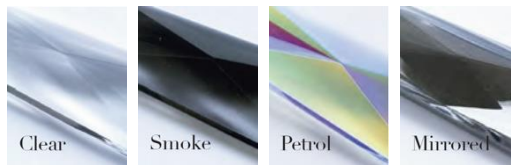




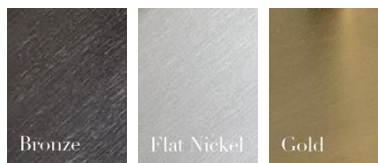
Crystal Colours



Chain Colours

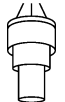
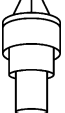
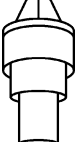


Metalwork Finishes



LONG CHANDELIER

Model Number — TL-UL-LONG

| Height excl. suspension | Suspension Chains | Lamp Holders | Max Wattage | Weight | Ceiling Rose Dia. | |
|--|-------------------|------------------------------|-------------|--------|-------------------|---|
| 410 Long Chandelier (16" Dia.) - TL-UL-410LONG | | | | | |  |
| 25" | 29 ¾" | 3 - E26 | 60W each | 29lb | 5 ¼" | |
| 510 Long Chandelier (20" Dia.) - TL-UL-510LONG | | | | | |  |
| 30 ¾" | 29 ¾" | 6 - E26 (across 2 levels) | 60W each | 49lb | 5 ¼" | |
| 710 Long Chandelier (28" Dia.) - TL-UL-710LONG | | | | | |  |
| 42 ¾" | 29 ¾" | 9 - E26 (across 2 levels) | 60W each | 82lb | 5 ¼" | |



General:

Height measurements for chandeliers do not include the suspension chains. Suspension chains for chandeliers can be adjusted to the height needed upon installation.

All of our lamp holders are standard large Edison Screw (E26).

Made to USA standards and designed to operate at 120V / 60Hz.

All measurements and weights are approximate - our lights are hand crafted so there will be some variation.

Please note, light sources are not supplied with UL Listed orders.

Assembly:

Crystal chandeliers will arrive with the crystal packaged separately in strands (this is common practice and is done to prevent damage to the crystal in transit). All you need to do to assemble your light is to hook each strand onto the frame with the hooks provided.

We recommend that you use a qualified electrician to install your light.

Our lights come with comprehensive installation instructions. They shouldn't need much maintenance, but we give you some information on that too.

Made in England.

All of our lights are designed and manufactured in England by skilled craftsmen and women.

All designs are copyright to Tigermoth Lighting Ltd.

Modifications available:

- Additional length of suspension chain
- Modified suspension for closer fitting to ceiling

Call us for more information on modifications.

Tigermoth Lighting is a Lighting Industry Association Quality Assured Company.



A range of Tigermoth Lighting products are UL approved under the UL General Coverage Scheme.



UL File No. E499008