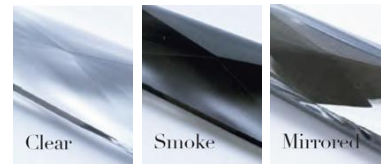




Crystal Colours



Chain Colours



Flex Colours

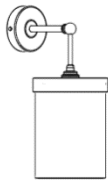
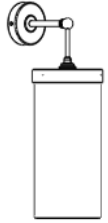


Metalwork Finishes



PENDANT WALL LIGHT WITH CRYSTAL OR CHAIN

Model Number — TL-UL-PENDANTWL + UL-PMINI / UL-PMAXI

Width	Height	Depth	Lamp Holders	Max Wattage	Weight	Wall Canopy Dia.	
Mini Pendant Wall Light – TL-UL-PENDANTWL + TL-UL-PMINI							
6 ¼"	15"	9 ½"	1 – E26	40W	2lb	4"	
Maxi Pendant Wall Light – TL-UL-PENDANTWL + TL-UL-PMAXI							
6 ¼"	20"	9 ½"	1 – E26	40W	5lb	4"	



General:

All of our lamp holders are standard large Edison Screw (E26).

Made to USA standards and designed to operate at 120V / 60Hz.

All measurements and weights are approximate - our lights are hand crafted so there will be some variation.

Please note, light sources are not supplied with UL Listed orders.

Assembly:

We recommend that you use a qualified electrician to install your light.

Our lights come with comprehensive installation instructions. They shouldn't need much maintenance, but we give you some information on that too.

Made in England.

All of our lights are designed and manufactured in England by skilled craftsmen and women.

All designs are copyright to Tigermoth Lighting Ltd.

Tigermoth Lighting is a Lighting Industry Association Quality Assured Company.



A range of Tigermoth Lighting products are UL approved under the UL General Coverage Scheme.

UL File No. E499008

